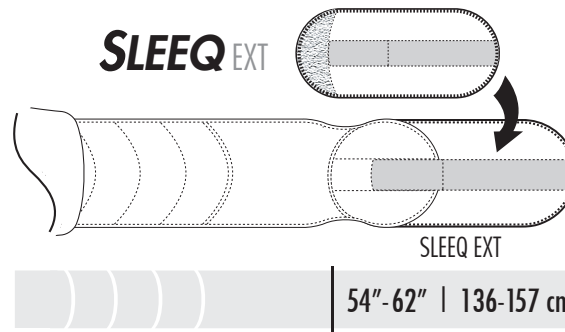


SLEEQ EXT

INSTRUCTIONS FOR USE / GEBRAUCHSANWEISUNG
 INSTRUCCIONES DE USO
 INSTRUCTIONS D'UTILISATION
 ISTRUZIONI PER L'USO



1.0

en Start

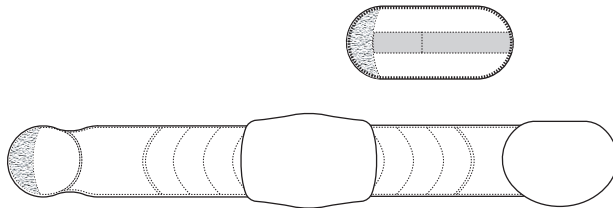
es Empezar

de Vorbereitung

fr Démarrage

it Avvio

1.1



Place

Lay SLEEQ EXT and SLEEQ brace on a flat surface with inside (grey side) of each facing up.

Description/Destination

SLEEQ EXT extension panel lengthens any SLEEQ brace to accommodate waist circumference range of 54" - 62" (136 - 157cm). Carefully read the indications, contraindications, precautions and undesirable side-effects of the SLEEQ brace instructions for use.

Colocar

Coloque los productos SLEEQ y SLEEQ EXT sobre una superficie plana con la parte interna (el lado de color gris) de cada uno hacia arriba.

Descripción/Usó

El panel de extensión SLEEQ EXT prolonga cualquier sistema ortopédico para tratamientos de la columna vertebral SLEEQ de forma que se adapte a un rango de circunferencias de la cintura de 136 - 157 cm (54" - 62"). Leer atentamente las indicaciones, contraindicaciones, precauciones y efectos secundarios indeseables en el manual de uso de SLEEQ.

Positionieren

Legen Sie den SLEEQ EXT-Verlängerungsgurt und die SLEEQ-Rückenorthese auf eine flache Oberfläche, sodass die Innenseiten (graue Seite) nach oben zeigen.

Beschreibung/ Zweckbestimmung

Der SLEEQ EXT-Verlängerungsgurt dient zur Erweiterung der SLEEQ-Rückenorthese und ermöglicht eine Anpassung an einen Taillenumfang von 136 bis 157 cm. Lesen Sie die Anzeigen, Gegenanzeigen, Vorsichtsmaßnahmen und Nebenwirkungen in der Gebrauchsanweisung der SLEEQ aufmerksam durch.

Positionnement

Placer l'extension SLEEQ EXT et la ceinture SLEEQ sur une surface plane avec la partie interne (grise) visible.

Description/Destination

Les panneaux d'extension SLEEQ EXT permettent d'agrandir toute ceinture de thérapie spinale SLEEQ afin de l'adapter à une circonférence de taille de 136-157 cm (54"-62"). Lire attentivement les indications, contre-indications, précautions et effets secondaires indésirables de la notice de SLEEQ.

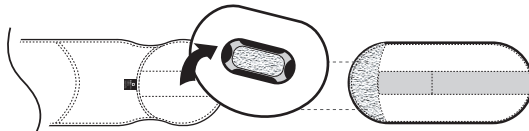
Posizionare

Stendere SLEEQ EXT e il corsetto SLEEQ su una superficie piana con la parte interna (lato grigio) di ciascuno rivolta verso l'alto.

Descrizione/Destinazione d'uso

Il pannello di prolunga SLEEQ EXT allunga un corsetto del sistema terapeutico spinale SLEEQ perché possa essere indossato da persone con una circonferenza della vita compresa tra 136 - 157 cm (54" - 62"). Leggere attentamente le indicazioni, le controindicazioni, le precauzioni e gli effetti indesiderati secondari nelle istruzioni per SLEEQ.

1.2



Remove

If included, detach AeroFlex Anterior Panel from SLEEQ brace.

Extraer

Si va incluido, desacople el panel anterior AeroFlex del aparato ortopédico SLEEQ.

Entfernen

Falls vorhanden, entfernen Sie die vordere AeroFlex-Polotte von der SLEEQ-Rückenorthese.

Retrait

S'il est fourni, retirer le panneau antérieur AeroFlex de la ceinture SLEEQ.

Rimuovere

Se incluso, staccare il pannello anteriore AeroFlex dal corsetto SLEEQ.

2.0

Setup

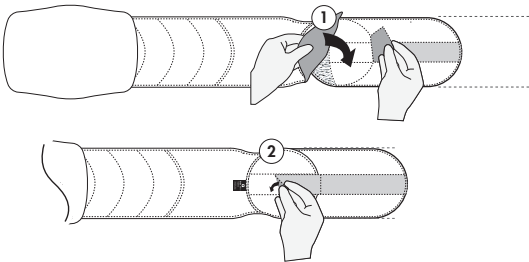
Preparar

Anpassung

Installation

Montaggio

2.1



Align & Attach

Align SLEEQ EXT to Wing and attach.

Alinear y acoplar

Alinear SLEEQ EXT a la aleta y acoplar.

Ausrichten & Befestigen

Richten Sie den SLEEQ EXT-Verlängerungsgurt an einem der Flügel der Orthese aus und befestigen Sie den Gurt.

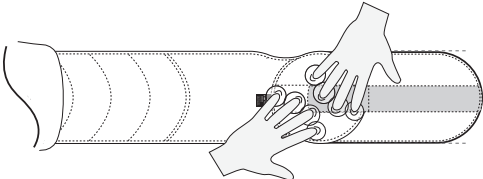
Alignement et fixation

Aligner l'extension SLEEQ EXT sur le rabat et fixer.

Allineare e fissare

Allineare SLEEQ EXT all'aletta e fissare.

2.2



Secure

Confirm SLEEQ EXT is firmly secured to Wing on both sides.

Fijar

Compruebe que SLEEQ EXT esté sujeto con firmeza a la aleta a ambos lados.

Sichern

Prüfen Sie, ob der SLEEQ EXT-Verlängerungsgurt auf beiden Seiten mit der Orthese verbunden ist.

Fixation

S'assurer que l'extension SLEEQ EXT est fermement fixée à chaque rabat de part et d'autre.

Fissare

Confermare che SLEEQ EXT sia fissato saldamente all'aletta su entrambi i lati.

Setup (cont.)

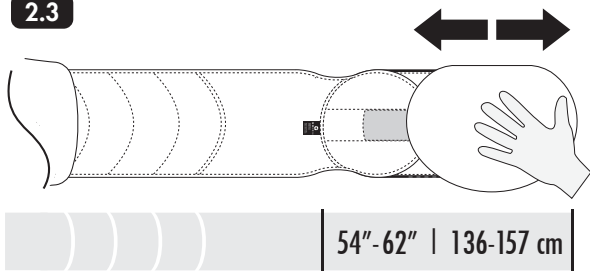
Preparar (cont.)

Einstellung (Forts.)

Installation (suite)

Montaggio (segue)

2.3



Re-attach

If included, re-Attach AeroFlex Anterior Panel. This support panel may be moved left or right to ensure it is centered on patient's abdomen.

Reacoplar

Si va incluido, desacople el panel anterior AeroFlex del aparato ortopédico. Este panel de apoyo se puede mover hacia la izquierda o hacia la derecha para tener la garantía de que esté centrado en el abdomen del paciente.

Wiederanbringen

Bringen Sie, sofern vorhanden, die vordere AeroFlex-Pelotte wieder an. Die Pelotte kann nach links oder rechts verschoben werden, um sicherzustellen, dass diese mittig im Bereich des Bauches positioniert ist.

Re-fixation

S'il est fourni, fixer à nouveau le panneau antérieur AeroFlex. Ce panneau de soutien peut être déplacé à droite ou à gauche afin de le centrer sur l'abdomen du patient.

Fissare di nuovo

Se incluso, ripetere il fissaggio del pannello anteriore AeroFlex. Questo pannello di sostegno può essere spostato a sinistra o a destra per assicurarsi che sia al centro sull'addome del/della paziente.

3.0

SLEEQ Application

Aplicación de SLEEQ

SLEEQ-Anwendung

Application de la ceinture SLEEQ

Applicazione SLEEQ

Refer to Instructions for Use included with every SLEEQ brace to apply as usual.

Consulte las instrucciones de uso que acompañan a todos los aparatos ortopédicos SLEEQ para aplicar estos del modo habitual.

Für die weitere Anwendung folgen Sie bitte der Gebrauchsanweisung, die jeder SLEEQ-Rückenorthese beiliegt.

Se reporter aux instructions d'utilisation fournies avec chaque ceinture SLEEQ pour l'appliquer de la manière habituelle.

Consultare le istruzioni per l'uso allegate a ogni corsetto SLEEQ per applicarlo come di consueto.

LIMITED WARRANTY

Thuasne, LLC warrants to the original purchaser that this product is free from defects in materials and workmanship. Normal wear and tear during the use of a product is not considered a defect. This Limited Warranty is effective from the date of delivery to the original purchaser. This warranty does not apply if this product:

- (1) has been altered in any way;
 - (2) was not purchased from Thuasne, LLC or one of its authorized distributors;
 - (3) is not used in accordance with Thuasne, LLC's Instructions for Use (IFU).
- Under this Limited Warranty Thuasne, LLC's sole obligation shall be to repair or replace the defective product or associated part(s) at no charge. This Limited Warranty does not cover damage as a result of mishandling, accidents, improper use or alteration of the product. This warranty is in place of all other warranties, either express or implied, including but not limited to warranties of merchantability or fitness for a particular purpose. Thuasne, LLC shall not be liable under this or any implied warranty for any personal injury, property damage, or special, incidental, or consequential damages arising out of, related, or incidental to the use of the product even if Thuasne, LLC has been informed of the prospect of such possible loss or damage, unless state law otherwise prohibits this exclusion. User should seek advice from their healthcare provider immediately if user encounters any kind of adverse reaction related to the use of this product. User should consult with their healthcare provider with any questions or concerns relating to the proper use of this product for their specific medical condition. IMPORTANT- Read all Instructions for Use (IFU) and any other associated materials to ensure proper use.



THUASNE LLC
4615 Shepard Street
Bakersfield, CA 93313
United States of America

Warnings

- Carefully read use/care instructions and warnings prior to use.
- If increased pain, swelling, sensation changes, or any adverse reactions are experienced while using this product, immediately consult your medical professional.
- For single patient use only.

Composition

Nylon, polyester, polyurethane

Care/Maintenance

Refer to the maintenance instructions of the SLEEQ brace.

Storage

Store at room temperature, preferably in the original packaging.

Disposal

Dispose of in accordance with local regulations.

Keep this instruction leaflet.

Advertencias

- Lea atentamente las instrucciones de uso y mantenimiento y las advertencias antes de utilizar el producto.
- Si experimenta más dolor, inflamación, cambios en cuanto a las sensaciones o reacciones adversas mientras utiliza este producto, consulte de inmediato a su profesional médico.
- Para uso con un solo paciente.

Composición

Nylon, poliéster, poliuretano

Mantenimiento

Consultar las instrucciones de mantenimiento de la SLEEQ.

Almacenamiento

Almacenar a temperatura ambiente, preferentemente en el embalaje original.

Eliminación

Eliminar conforme a la reglamentación local vigente.

Conservar estas instrucciones.

Warnhinweise

- Lesen Sie die Gebrauchsanweisung, Pflegehinweise und Warnhinweise vor dem Gebrauch der Orthese sorgfältig durch.
- Sollten während der Anwendung dieses Produkts stärkere Schmerzen, Schwellungen, Empfindungsstörungen oder andere unerwünschte Reaktionen auftreten, wenden Sie sich umgehend an einen Arzt.
- Das Produkt ist nur zur Anwendung bei einer Person bestimmt (Einmalversorgung).

Zusammensetzung

Nylon, polyester, polyurethan

Pflege

Pflegeanleitung der SLEEQ beachten.

Aufbewahrung

Bei Raumtemperatur und vorzugsweise in der Originalverpackung aufbewahren.

Entsorgung

Den örtlich geltenden Vorschriften entsprechend entsorgen.

Diesen Beipackzettel aufbewahren

Avertissements

- Lire attentivement les instructions et les avertissements d'utilisation/soin avant toute utilisation.
- En cas d'augmentation de la douleur, de gonflement, de changement de sensation ou de toute autre réaction indésirable lors de l'utilisation de ce produit, consulter immédiatement le professionnel de santé qui vous suit.
- À usage unique exclusivement.

Composition

Nylon, polyester, polyuréthane

Entretien

Se référer aux instructions d'entretien de la SLEEQ.

Stockage

Stocker à température ambiante, de préférence dans l'emballage d'origine.

Élimination

Éliminer conformément à la réglementation locale en vigueur.

Conserver cette notice.

Avvertenze

- Prima dell'uso, leggere attentamente le istruzioni e le avvertenze relative all'uso/alla manutenzione.
- Se durante l'utilizzo di questo prodotto, si avvertono aumento del dolore, gonfiore, alterazioni sensoriali o altre reazioni indesiderate, consultare immediatamente il medico.
- Esclusivamente per l'uso su un singolo paziente.

Composizione

Nylon, poliestere, poliuretano

Manutenzione

Consultare le istruzioni per la manutenzione della SLEEQ.

Conservazione

Conservare a temperatura ambiente, preferibilmente nella confezione originale.

Smaltimento

Smaltire conformemente alla regolamentazione locale in vigore.

Conservare queste istruzioni.



MEDENVOY GLOBAL B.V.
PRINSES MARGRIETPLANTSOEN 33
SUITE 123
2595 AM THE HAGUE
THE NETHERLANDS

UK Responsible Person (UKRP):



THUASNE UK Ltd
Unit 4 Orchard Business Centre
North Farm Road
Tunbridge Wells, TN2 3XF,
United Kingdom



www.ThuasneUSA.com
www.Thuasne.com/global-contact