

Description

The Spoooner is intended for the treatment of the indications listed in this document. The instructions are guidelines for use only and are not offered as medical recommendations.

Indications

- Patella Instability
- Patella-femoral pain syndrome
- Lateral patellar subluxation
- Lateral patellar dislocations
- patello-femoral arthritis
- lateral patellar compression syndrome

Contraindications

- Open ulcers or skin conditions

Instructions for Care



- Hand wash cold with mild detergent
- Do not tumble
- Lay flat to dry

Warranty

Six month limited warranty. Thuasne USA warrants to the original purchaser that this product is free from defects in materials and workmanship. Normal wear and tear during the use of a product is not considered a defect. This limited warranty is effective from the date of delivery to the original purchaser up to five months. This warranty does not apply if this product: (1) has been altered in any way; (2) was not purchased from Thuasne USA or one of its authorized distributors; (3) is not used in accordance with Thuasne USA's Instructions for Use (IFU).

Warnings & Precautions

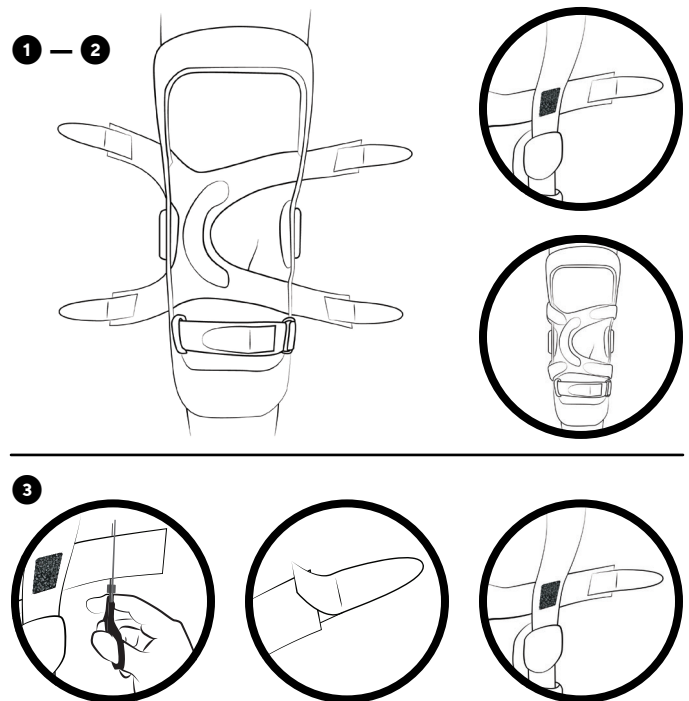
Follow the advice of the medical professional who prescribed this product. Immediately discontinue use of this product if there is any abnormal redness that lasts more than 10 minutes after removing the device, any skin irritation, bruising, blistering, or abrasion, and contact your medical professional.

Product Disclaimer

This product is prescribed by a physician and should be used in accordance with their instructions, as part of a treatment plan for global health. Due to variations in age, health and physical condition, Thuasne does not make any specific recommendations regarding appropriate activities for the user of this product. As the manufacturer has no role in patient selection, or fitting and adjusting the product, or any role in instructing the patient and/or monitoring the use of the product, Thuasne cannot be held responsible for the results arising from the use of the product.

Fitting Instructions

1. With the brace on the leg, position The Spoooner at knee center with patella buttress positioned along the edge of the patella on the side which needs bolstering (medial or lateral).
2. Slide straps between the leg and the brace on each side of the upper and lower frame, wrap the straps over the frame and attach with the Velcro tabs. Fit should be snug and supportive, but not uncomfortable.
3. To trim excess strap lengths, remove the Velcro tabs, use scissors to cut strap to appropriate length and reapply the Velcro tabs.



Distributed by Thuasne USA

4615 Shepard Street,
Bakersfield, CA 93313
United States
Tele: 800.432.3466
Fax: 800.798.2722
ThuasneUSA.com

L-0157 REV. A



New Options Sports
1850 Diplomat Drive, Suite #100
Farmers Branch, TX 75234
United States
800.872.5488